



## HISTORIC DISTRICT COMMISSION MEETING AGENDA

FEBRUARY 3, 2026

5:15 PM

VIEW ONLINE: [HTTPS://US02WEB.ZOOM.US/J/87400506707](https://us02web.zoom.us/j/87400506707)

### DISCLAIMER:

THE CITY OF ROGERS MAKES NO CLAIMS, PROMISES, OR GUARANTEES REGARDING THE PARTICIPANTS ABILITY TO ATTEND ANY PUBLIC MEETING VIRTUALLY. TECHNOLOGY RESOURCES, VIRTUAL MEETING PLATFORMS, AND THE INTERNET MAY OCCASIONALLY BE INTERRUPTED OR MADE UNAVAILABLE BY CAUSES BEYOND THE CITY'S REASONABLE CONTROL. THE CITY CANNOT GUARANTEE THAT PARTICIPANTS WILL HAVE THE OPPORTUNITY TO PARTICIPATE VIRTUALLY AT ALL TIMES. PUBLIC FORUMS, PUBLIC HEARINGS, AND SCHEDULED ITEMS OF BUSINESS WILL NOT BE TABLED OR POSTPONED DUE TO TECHNOLOGICAL ISSUES. IF YOU ARE REPRESENTING A PUBLISHED ITEM OF BUSINESS OR WISH TO SPEAK AT A PUBLIC HEARING, IN PERSON ATTENDANCE IS REQUIRED.

## AGENDA

### CALL TO ORDER:

### ROLL CALL:

### ACTION ON MINUTES:

- a. Approving January 6, 2026 meeting minutes.

### PUBLIC FORUM:

Public testimony on any issue not listed on the agenda may be provided at this time.

### PUBLIC HEARINGS:

#### a. OLD BUSINESS

#### b. NEW BUSINESS

##### i. 5G Consulting COA

A request by 5G Consulting for a Certificate of Appropriateness to install a new sign at 114 W. Elm Street.

STAFF: Laural Scates, Planner I

REPRESENTED BY: Abby Critselous

### REPORTS :

**a. COMMISSIONERS**

**b. STAFF**

**ADJOURN:**



COMMUNITY DEVELOPMENT  
PLANNING DIVISION  
301 W. CHESTNUT  
planning@rogersar.gov  
(479) 621-1186

## ROGERS HISTORIC DISTRICT COMMISSION MINUTES: January 6, 2026

### **CALL TO ORDER**

The Historic District Commission met for a public meeting at Rogers City Hall at 301 W. Chestnut Street on January 6, 2026 at 5:15 P.M. The meeting was called to order by Chairman Ezequiel Tovar.

### **ROLL CALL**

Commissioners attending: Jorge Andrade, Hannah Cicioni, Ed McClure, Derek Burnett, and Ezequiel Tovar

Absent:

### **ACTION ON MINUTES**

Motion by McClure, second Cicioni, to approve the meeting minutes from November 4, 2025.

Voice vote: YES (unanimous). Motion carried.

Minutes **APPROVED**.

### **PUBLIC FORUM**

### **OLD BUSINESS**

### **NEW BUSINESS**

### **REPORTS**

Chairman Tovar stated there are no items of new business. Voting of the 2026 officers. Chair will be Ed McClure, Vice Chair will be Hannah Cicioni, and Secretary is Jorge Andrade.

### **ADJOURN**

There being no further business, the Chair adjourned the meetings at 5:18 PM.

**Approved by vote of the Historic District Commission on:**

---

Jorge Andrade, Secretary

## COA: Harris Bakery



*Vicinity Map*

### Summary

#### Nature of Request

Addition of a steel and aluminum sign that has a powder coated finish and is internally lit, to be mounted on the front facade.

#### COA Scope of Work

Category II

#### Relevant Design Guidelines

6.25 (Signage)

#### Location

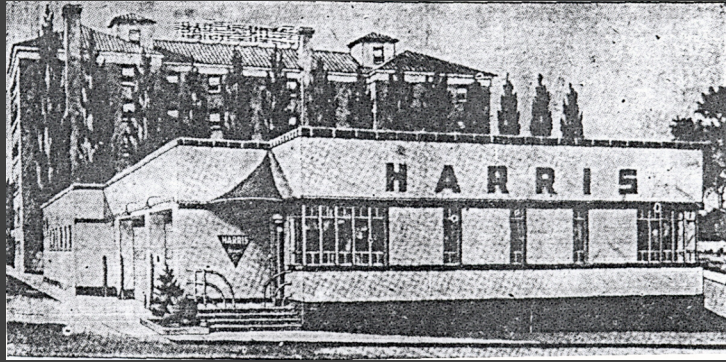
114 W Elm St

#### Representative

Abby Critselous

Staff: Laural Scates, Planner I ([lscates@rogersar.gov](mailto:lscates@rogersar.gov))

## COA: Harris Bakery



*Historical Photo*

### Summary Continued

#### Architectural Background

- Historically known as the Harris Bakery Building
- Built in 1929 in the art deco architectural style
- Key Characteristics of Style: Variety of colors and textures, stucco and tile combined, projecting sunshades, rounded corner windows, colored brick or tile, zig-zags or chevron moldings, molded metal panels or grills, and repetitive geometric forms.

Staff: Laural Scates, Planner I ([lscates@rogersar.gov](mailto:lscates@rogersar.gov))

# COA: Harris Bakery



## Compatibility with Design Guidelines



- 6.25 (Signage):
  - A) "All signage is subject to underlying city code."
  - C) "Signs should be sized in proportion to the building"
  - E) "Signs, regardless of its placement, should not be so large as to detract from the architectural integrity of the structure."
  - F) "Lighting for exterior signs should be concealed with no bare bulbs. Up-lit lighting is recommended. Light source is limited to no larger than a 60 watt incandescent bulb."
  - L) "Painted wood and metal are appropriate materials for signs... Basic block lettering or simple decorative style is appropriate."
  - M) "Color of signs shall be in harmony with the facade of the building."
  - N) "Position flush-mounted signs so they will fit within architectural features. Locate flush signs so they do not extend beyond the outer edges of the building front. Avoid obscuring ornament and detail."

## COA: Harris Bakery



*Proposed Improvements*

### Summary

- The applicant is proposing a steel and aluminum sign that has a powder coated finish. It is internally lit as to not cause distraction, and will be wall mounted on the front facade facing Elm Street near the main entrance of the building.
- In historic pictures, the bakery building had a sign in the same location.

# COA: Harris Bakery



*Proposed Improvements*



**STAFF RECOMMENDATION:**  
Approve

# COA: Harris Bakery



## Historic District Commission Considerations per Sec. 24-6(d):

## Public Input Received:

- a) The Rogers Commercial Historic District design guidelines;
- b) Applicable state law;
- c) Refer to the considerations listed under section 24-1 of the Code of Ordinances;